



# Technical datasheet

## TAB750



Brand	EREA
Article Number	TAB750
EAN-code Barcode	5414503004895
Code	2724
Product type	Single-phase autotransformer
Primary Voltage	0-110-130-230-240V AC
Secondary Voltage	0-110-130-230-240V AC
Power	750 VA
Standards	EN 61558-2-13

### General properties

Applications	For all applications	Maximum ambient temperature ta	40 °C
Protection class	Prepared for protection class II	Temperature class transfo	E
Degree of protection	IP00	Finishing	Vacuum-encapsulated with synthetic resin

### Electrical properties

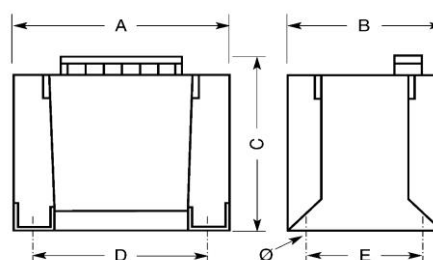
Frequency	50-60 Hz	Efficiency	96 %
Po	14 W	Pcu	15,6 W
Specific property	Reversible		

### Mechanical properties

Primary connection	Screw terminals 6 mm <sup>2</sup>
Secondary connection	Screw terminals 6 mm <sup>2</sup>
Fixation	Fixing lugs (original supply)

### Dimensions/weight

Dimensions AxBxC	130x110x125 mm
Dimension D	105 mm
Dimension E	90 mm
Dimension Ø	6 mm
Weight	6,3 kg



rev. 03.12.2020