



Technical datasheet

TAB1000



Brand	EREA
Article Number	TAB1000
EAN-code Barcode	5414503004840
Code	2026
Product type	Single-phase autotransformer
Primary Voltage	0-110-130-230-240V AC
Secondary Voltage	0-110-130-230-240V AC
Power	1 000 VA
Standards	EN 61558-2-13

General properties

Applications	For all applications	Maximum ambient temperature t_a	40 °C
Protection class	Prepared for protection class II	Temperature class transfo	E
Degree of protection	IP00	Finishing	Vacuum-encapsulated with synthetic resin

Electrical properties

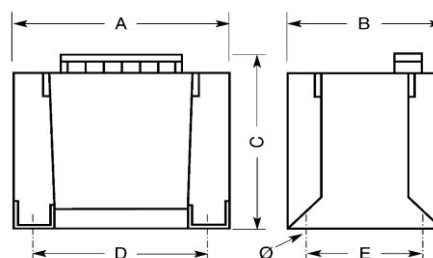
Frequency	50-60 Hz	Efficiency	96 %
Po	19,5 W	Pcu	20,7 W
Specific property	Reversible		

Mechanical properties

Primary connection	Screw terminals 6 mm ²
Secondary connection	Screw terminals 6 mm ²
Fixation	Fixing lugs (original supply)

Dimensions/weight

Dimensions AxBxC	160x115x150 mm
Dimension D	130 mm
Dimension E	95 mm
Dimension Φ	6 mm
Weight	8,9 kg



rev. 03.12.2020