



Technical datasheet

SPT10000/D/500



Brand	EREA
Article Number	SPT10000/D/500
EAN-code Barcode	5414503123602
Code	12360
Product type	Three-phase separating transformer
Primary Voltage	3x 500V Δ
Secondary Voltage	3 x 230V Δ -- 3x 400V Y+N
Power	10 000 VA
Standards	EN 61558-2-4 (EN 60742)

General properties

Applications	For industrial applications	Maximum ambient temperature ta	40 °C
Protection class	Prepared for protection class I	Temperature class transfo	B
Degree of protection	IP00	Finishing	Vacuum- and pressure- varnish impregnated

Electrical properties

Frequency	50-60 Hz	Efficiency	96,5 %
Po	92,5 W	Pcu	270 W
Dielectric Strength	4500 Vac	Insulation resistance	200 MΩ
Dielectric strength referred to frame	2500 Vac	Specific property	Primary delta connected, secondary not connected
Voltage drop (dU%)	2,6 %	Short-circuit voltage (Ucc %)	-
Recommended fuse PRI	D16A/C32A (3x500V Δ)	Recommended fuse SEC	C25A (3x230V Δ) C16A (3x400V Y+N)

Mechanical properties

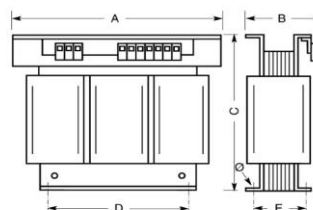
Primary connection	Screw terminals 10 mm ²
Secondary connection	Screw terminals 10 mm ²
Fixation	Supports with fixing holes

Protection case

Housing IP20	U 2222720
Housing IP23	K23EI400/001
Housing IP44	K44EI400/010

Dimensions/weight

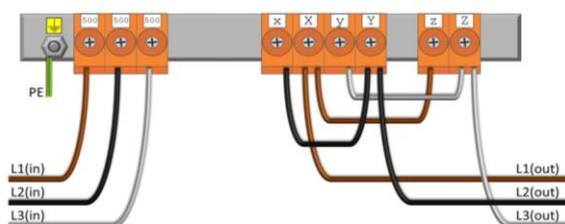
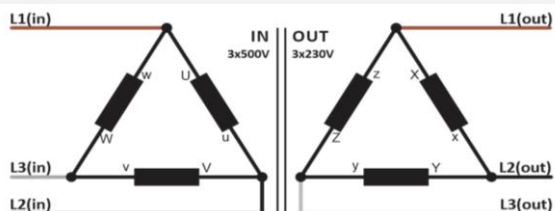
Dimensions AxBxC	480x180x415 mm
Dimension D	320 mm
Dimension E	150 mm
Dimension Φ	11 mm
Weight	70 kg



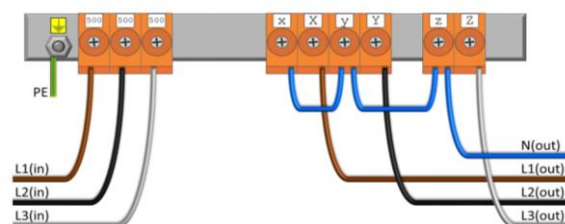
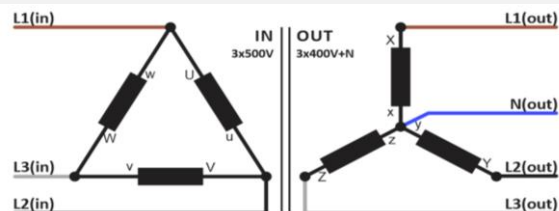


Connection diagram SPT10000/D/500

3x 500V Δ → 3 x 230V Δ



3x 500V Δ → 3x 400V Y+N

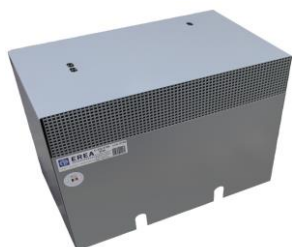




Accessories SPT10000/D/500

IP20 housing

U 2222720



IP23 housing

K23EI400/001



Vibration damper

(4 pieces needed per transformer)

Silent block 20

