



Technical datasheet

EF 224SB160



Brand	EREA
Article Number	EF 224SB160
EAN-code Barcode	5414503003485
Code	2052
Product type	Single-phase safety transformer
Primary Voltage	230-400V AC
Secondary Voltage	2 x 24V AC
Power	160 VA
Standards	EN 61558-2-6 EN 60742

General properties

Applications	For all SELV applications	Maximum ambient temperature ta	40 °C
Protection class	II	Temperature class transfo	E
Degree of protection	IP54	Finishing	Vacuum-encapsulated with synthetic resin

Electrical properties

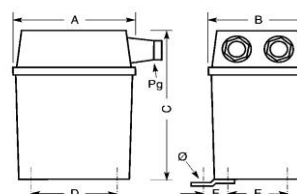
Frequency	50-60 Hz	Efficiency	89 %
Po	8 W	Pcu	12,2 W
Dielectric Strength	4500 Vac	Insulation resistance	200 MΩ
Dielectric strength referred to frame	-	Specific property	-
Voltage drop (dU%)	7,5 %		

Mechanical properties

Primary connection	Screw terminals 4 mm ²
Secondary connection	Screw terminals 4 mm ²
Fixation	Fixing lugs (original supply)

Dimensions/weight

Dimensions AxBxC	95x80x133 mm
Dimension D	70 mm
Dimension E	56 mm
Dimension Φ	5 mm
Weight	3,6 kg



rev. 02.12.2020