



Technical datasheet

EF 212SC250



Brand	EREA
Article Number	EF 212SC250
EAN-code Barcode	5414503003454
Code	2049
Product type	Single-phase safety transformer
Primary Voltage	230V AC
Secondary Voltage	2 x 12V AC
Power	250 VA
Standards	EN 61558-2-6 EN 60742

General properties

Applications	For all SELV applications	Maximum ambient temperature ta	40 °C
Protection class	II	Temperature class transfo	E
Degree of protection	IP54	Finishing	Vacuum-encapsulated with synthetic resin

Electrical properties

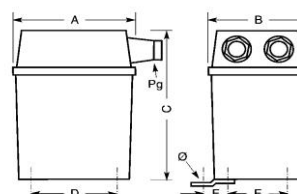
Frequency	50-60 Hz	Efficiency	91 %
Po	10 W	Pcu	14,1 W
Dielectric Strength	4500 Vac	Insulation resistance	200 MΩ
Dielectric strength referred to frame	-	Specific property	-
Voltage drop (dU%)	6 %		

Mechanical properties

Primary connection	Screw terminals 4 mm ²
Secondary connection	Screw terminals 4 mm ²
Fixation	Fixing lugs (original supply)

Dimensions/weight

Dimensions AxBxC	107x90x142 mm
Dimension D	80 mm
Dimension E	64 mm
Dimension Φ	5 mm
Weight	3,8 kg



rev. 02.12.2020