



Technical datasheet

EDR 24TS30



Brand	EREA
Article Number	EDR 24TS30
EAN-code Barcode	5414503003416
Code	2409
Product type	Single-phase safety transformer
Primary Voltage	230-400V AC
Secondary Voltage	24V AC
Power	30 VA
Standards	EN 61558-2-6 EN 60742

General properties

Applications	For all SELV applications	Maximum ambient temperature ta	50 °C
Protection class	Prepared for protection class II	Temperature class transfo	B
Degree of protection	IP20	Finishing	Vacuum-encapsulated with synthetic resin

Electrical properties

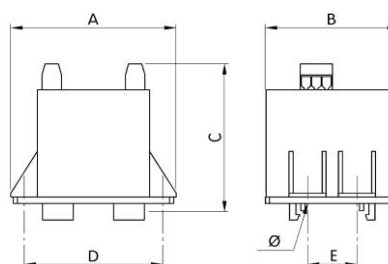
Frequency	50-60 Hz	Efficiency	81 %
Po	2,6 W	Pcu	4,7 W
Dielectric Strength	4500 Vac	Insulation resistance	200 MΩ
Dielectric strength referred to frame	-	Specific property	-
Voltage drop (dU%)	13,6 %	Short-circuit voltage (Ucc %)	12,6 %

Mechanical properties

Primary connection	Screw terminals 2,5 mm ²
Secondary connection	Screw terminals 2,5 mm ²
Fixation	DIN-rail mounting

Dimensions/weight

Dimensions AxBxC	81x65x81 mm
Dimension D	68 mm
Dimension E	24 mm
Dimension Φ	5 mm
Weight	1 kg



rev. 18.11.2020

