



# Technical datasheet

## EDR 24TS10



Brand	EREA
Article Number	EDR 24TS10
EAN-code Barcode	5414503003386
Code	2408
Product type	Single-phase safety transformer
Primary Voltage	230-400V AC
Secondary Voltage	24V AC
Power	10 VA
Standards	EN 61558-2-6 EN 60742

### General properties

Applications	For all SELV applications	Maximum ambient temperature ta	50 °C
Protection class	Prepared for protection class II	Temperature class transfo	B
Degree of protection	IP20	Finishing	Vacuum-encapsulated with synthetic resin

### Electrical properties

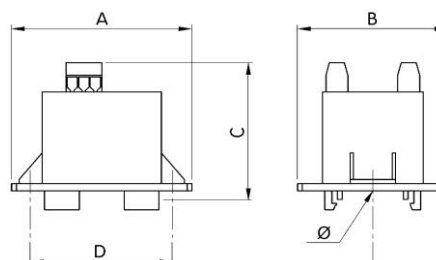
Frequency	50-60 Hz	Efficiency	76 %
Po	1,3 W	Pcu	2,3 W
Dielectric Strength	4500 Vac	Insulation resistance	200 MΩ
Dielectric strength referred to frame	-	Specific property	-
Voltage drop (dU%)	18,9 %	Short-circuit voltage (Ucc %)	16,9 %

### Mechanical properties

Primary connection	Screw terminals 2,5 mm <sup>2</sup>
Secondary connection	Screw terminals 2,5 mm <sup>2</sup>
Fixation	DIN-rail mounting

### Dimensions/weight

Dimensions AxBxC	78x65x67 mm
Dimension D	61 mm
Dimension E	-
Dimension Φ	4 mm
Weight	1 kg



rev. 18.11.2020

