



Technical datasheet

230TC10000



Brand	EREA
Article Number	230TC10000
EAN-code Barcode	5414503000149
Code	2212
Product type	Single-phase control transformer
Primary Voltage	15-0-230-400V AC
Secondary Voltage	2 x 0-115V AC
Power	10 000 VA
Standards	EN 61558-2-4 EN 60742

General properties

Applications	For all applications, especially designed for inrush power in	Maximum ambient temperature ta	40 °C
Protection class	Prepared for protection class I	Temperature class transfo	B
Degree of protection	IP00	Finishing	Vacuum- and pressure- varnish impregnated

Electrical properties

Frequency	50-60 Hz	Efficiency	97 %
Po	75 W	Pcu	184 W
Dielectric Strength	4500 Vac	Insulation resistance	200 MΩ
Dielectric strength referred to frame	2500 Vac	Specific property	Reversible
Voltage drop (dU%)	1,8 %	Short-circuit voltage (Ucc %)	1,7 %
Recommended fuse PRI	D63A / aM63A (230V) D40A / aM40A (400V)	Recommended fuse SEC	C100A / gG100A (115V) C50A / gC50A (230V)

Mechanical properties

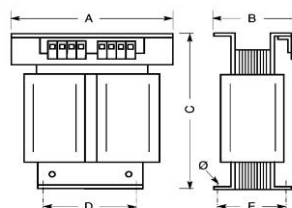
Primary connection	Screw terminals 10 mm ²
Secondary connection	Screw terminals 10 mm ²
Fixation	Supports with fixing holes

Protection case

Housing IP20	U 222748
Housing IP23	K23UI240/002
Housing IP44	K44UI400/010

Dimensions/weight

Dimensions AxBxC	320x210x415 mm
Dimension D	210 mm
Dimension E	170 mm
Dimension Φ	11 mm
Weight	73 kg





Accessories 230TC10000

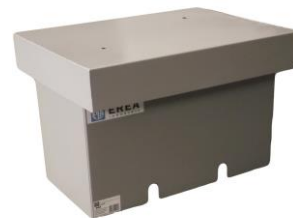
IP20 housing

U 222748



IP23 housing

K23UI240/002



Vibration damper

(4 pieces needed per transformer)

Silent block 50

